



DAILY BULLION REPORT

27 May 2026

27 May 2026

BULLDEX SNAPSHOT

Commodity	Expiry	Open	High	Low	Close	% Change
MCXBULLDEX	27-May-26	38376.00	38376.00	38376.00	38376.00	-0.99

BULLION SNAPSHOT

Commodity	Expiry	Open	High	Low	Close	% Change
GOLD	5-Jun-26	158789.00	158789.00	157424.00	157616.00	-0.92
GOLD	5-Aug-26	161869.00	161961.00	160710.00	160861.00	-0.94
GOLDMINI	5-Jun-26	158120.00	158150.00	156905.00	157143.00	-0.87
GOLDMINI	3-Jul-26	159816.00	160033.00	158826.00	158964.00	-0.88
SILVER	3-Jul-26	274727.00	274727.00	269645.00	270628.00	-2.20
SILVER	4-Sep-26	279600.00	280180.00	276516.00	277287.00	-1.97
SILVERMINI	30-Jun-26	278200.00	278200.00	273775.00	274793.00	5.33
SILVERMINI	31-Aug-26	283453.00	284500.00	280350.00	281108.00	1.55

OPEN INTEREST SNAPSHOT

Commodity	Expiry	% Change	% Oi Change	Oi Status
MCXBULLDEX	27-May-26	-0.99	0.00	Long Liquidation
MCXBULLDEX	24-Jun-26	0.00	0.00	Long Liquidation
GOLD	5-Jun-26	-0.92	-7.71	Long Liquidation
GOLD	5-Aug-26	-0.94	12.36	Fresh Selling
GOLDMINI	5-Jun-26	-0.87	-130.27	Long Liquidation
GOLDMINI	3-Jul-26	-0.88	-35.09	Long Liquidation
SILVER	3-Jul-26	-2.20	3.15	Fresh Selling
SILVER	4-Sep-26	-1.97	2.77	Fresh Selling
SILVERMINI	30-Jun-26	-2.00	5.33	Fresh Selling
SILVERMINI	31-Aug-26	-1.85	1.55	Fresh Selling

INTERNATIONAL BULLION SNAPSHOT

Commodity	Open	High	Low	Close	% Change
Gold \$	4519.59	4525.89	4514.23	4517.08	-0.06
Silver \$	77.38	77.53	77.16	77.18	-0.25

RATIOS

Ratio	Price	Ratio	Price	Ratio	Price
Gold / Silver Ratio	58.24	Silver / Crudeoil Ratio	30.02	Gold / Copper Ratio	116.13
Gold / Crudeoil Ratio	17.49	Silver / Copper Ratio	199.39	Crudeoil / Copper Ratio	6.64

Important levels for Jewellery/Bullion Dealers



Booking Price for Sellers	Booking Price for Buyers
157926.00	157306.00
158136.00	157096.00



Booking Price for Sellers	Booking Price for Buyers
271348.00	269908.00
272108.00	269148.00



Booking Price for Sellers	Booking Price for Buyers
96.01	95.65
96.23	95.43

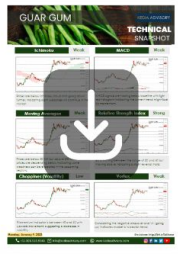
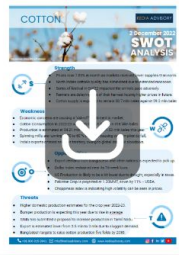
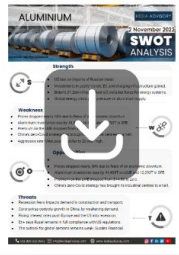


Booking Price for Sellers	Booking Price for Buyers
4529.90	4504.60
4542.80	4491.70



Booking Price for Sellers	Booking Price for Buyers
77.59	76.77
77.90	76.46

Click here for download Kedia Advisory **Special Research Reports**



Technical Snapshot



SELL GOLD JUN @ 158500 SL 159500 TGT 157200-156200. MCX

Observations

Gold trading range for the day is 156580-159310.

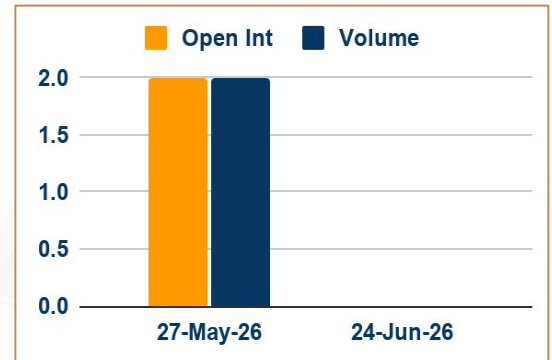
Gold falls as energy-driven inflation threatens to push interest rates higher

Markets currently expect a 25-basis-point Fed rate hike in December.

UBS lowers year – end 2026 gold price forecast to \$5,500/oz

CFTC-COMEX gold speculators cut net long position by 6,239 contracts to 94,388 in week to May 19

OI & Volume



Spread

GOLD AUG-JUN	3245.00
GOLDMINI JUL-JUN	1821.00

Trading Levels

Commodity	Expiry	Close	R2	R1	PP	S1	S2
GOLD	5-Jun-26	157616.00	159310.00	158465.00	157945.00	157100.00	156580.00
GOLD	5-Aug-26	160861.00	162425.00	161640.00	161175.00	160390.00	159925.00
GOLDMINI	5-Jun-26	157143.00	158645.00	157895.00	157400.00	156650.00	156155.00
GOLDMINI	3-Jul-26	158964.00	160485.00	159725.00	159275.00	158515.00	158065.00
Gold \$		4517.08	4530.66	4523.77	4519.00	4512.11	4507.34

Technical Snapshot



SELL SILVER JUL @ 273000 SL 276000 TGT 270000-267000. MCX

Observations

Silver trading range for the day is 266585-276745.

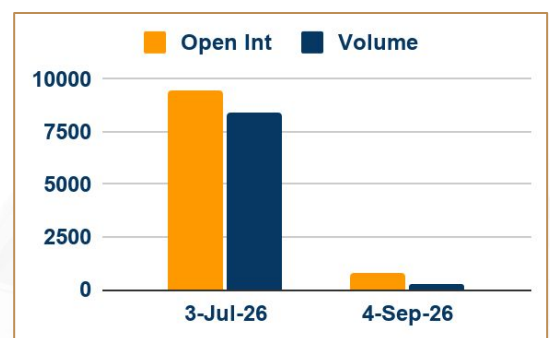
Silver fell as heightened uncertainty in the Middle East kept investors cautious about inflation risks.

Hawkish Federal Reserve expectations driven by elevated Oil prices continue to weigh.

CFTC-COMEX silver speculators cut net long position by 4,434 contracts to 11,761 in week to May 19

Traders now await the US PCE inflation report due on Thursday for fresh clues on the central bank's monetary policy outlook.

OI & Volume



Spread

SILVER SEP-JUL	6659.00
SILVERMINI AUG-JUN	6315.00

Trading Levels

Commodity	Expiry	Close	R2	R1	PP	S1	S2
SILVER	3-Jul-26	270628.00	276745.00	273685.00	271665.00	268605.00	266585.00
SILVER	4-Sep-26	277287.00	281660.00	279475.00	277995.00	275810.00	274330.00
SILVERMINI	30-Jun-26	274793.00	280015.00	277405.00	275590.00	272980.00	271165.00
SILVERMINI	31-Aug-26	281108.00	286135.00	283620.00	281985.00	279470.00	277835.00
Silver \$		77.18	77.66	77.42	77.29	77.05	76.92

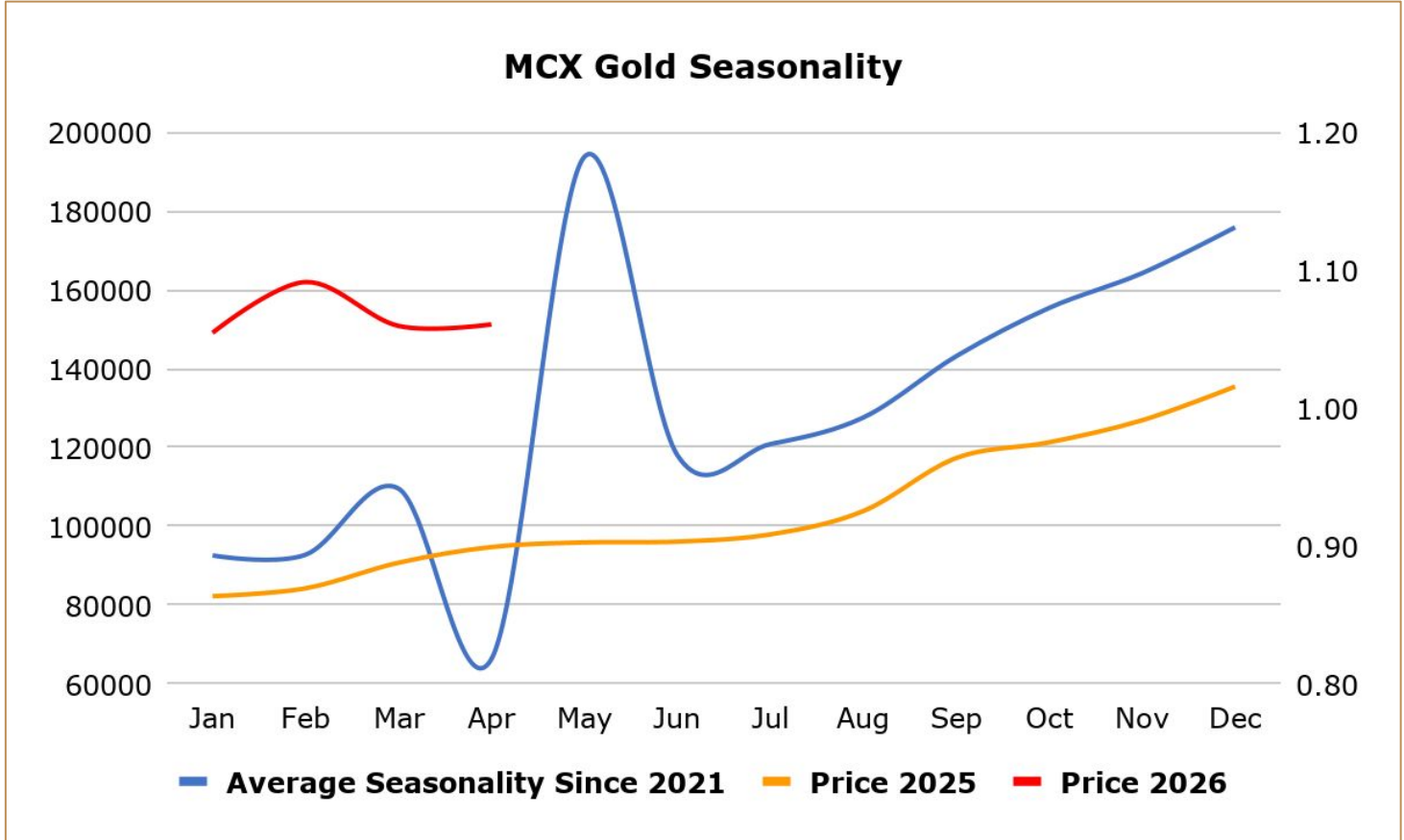
Gold fell on bets of higher U.S. interest rates this year, with U.S. military strikes on Iran dialing back hopes of a peace deal, elevating oil prices, and bringing inflation concerns to the forefront. Raising inflation concerns, the price of Brent crude oil rose more than 3% as uncertainty lingered over whether a peace deal between the U.S. and Iran would be reached to open up shipping flows through the Strait of Hormuz. Federal Reserve Governor Christopher Waller, said the Fed should axe the "easing bias" from its policy statement and effectively open the door to a possible rate hike. Central bank demand for gold has been stronger than previously estimated and is likely to pick up again into 2026, Goldman Sachs said, after revising its model to account for gaps in official trade data.

ASIA GOLD – Price volatility keeps India demand subdued, China premiums ease - Gold kept trading at a steep discount in India , as price volatility dampened demand, while premiums eased in China. Dealers in India quoted discounts of up to \$78 an ounce over official domestic prices, down from the prior week's record discounts of up to \$207 an ounce. The South Asian country earlier this month raised import tariffs on gold and silver to 15% from 6% as part of efforts to reduce overseas purchases of the metals and ease pressure on foreign exchange reserves from higher oil prices. Jewellers are reluctant to build stocks as the wedding season draws to a close and uncertainty persists over retail demand. In top consumer China, bullion traded at premiums of \$10 to \$20 an ounce over the global benchmark price, compared with the previous week's premiums of \$15 to \$20. In Hong Kong, gold traded at par to premiums of \$2, while in Japan, gold was sold at a discount of \$0.25. In Singapore, gold was sold at premiums of \$1 to \$3.

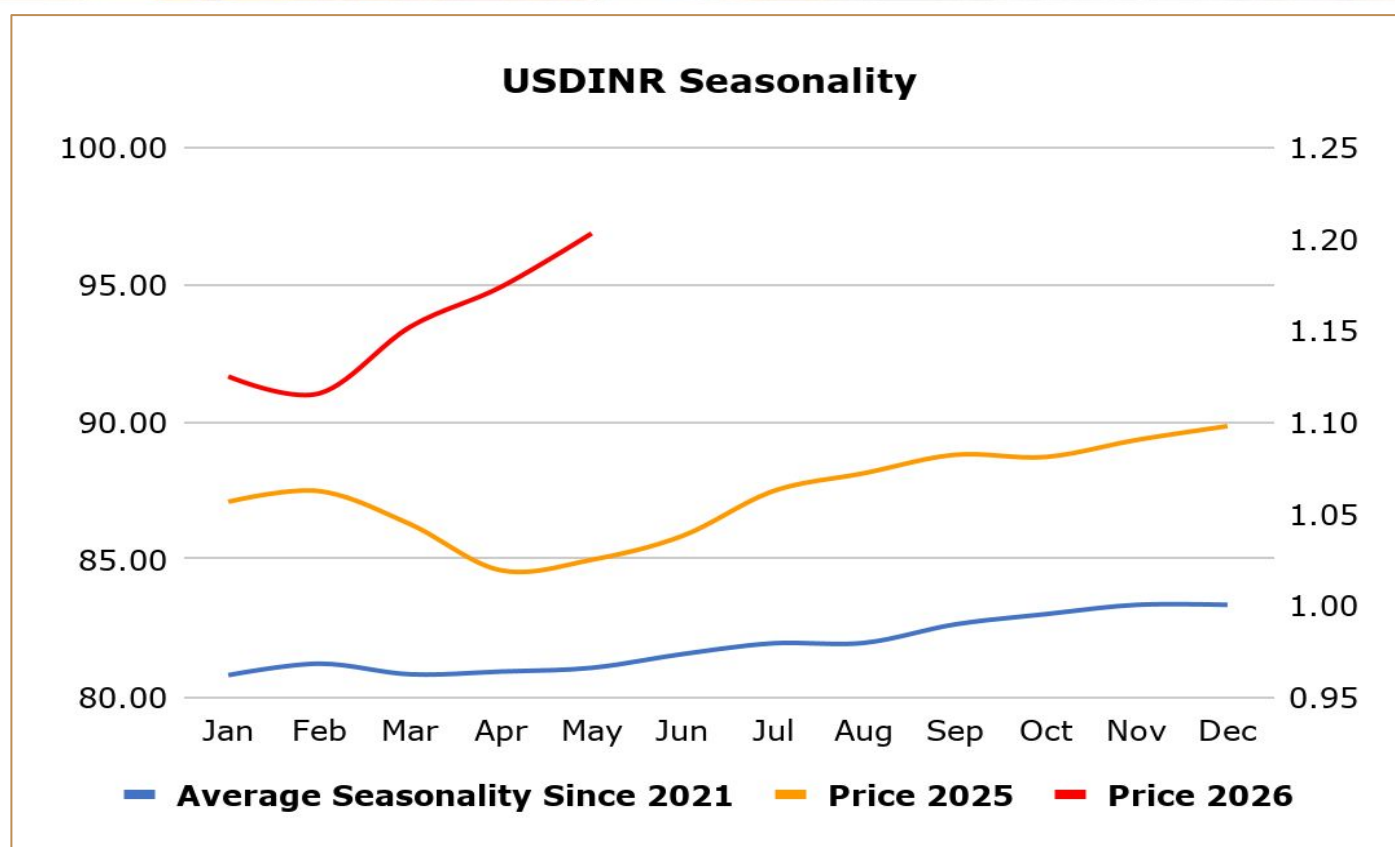
India raises gold and silver tariffs to 15% to curb imports, support rupee - India has raised import tariffs on gold and silver to 15% from 6%, government orders said, as part of efforts to curb overseas purchases of the metals and ease pressure on the country's foreign exchange reserves. The higher duties could dampen demand in the world's second-largest consumer of precious metals, although they may help narrow India's trade deficit and support the rupee, one of Asia's worst-performing currencies. However, industry officials warned higher import taxes could revive smuggling, which had eased after India cut tariffs in mid-2024. The government has imposed a 10% basic customs duty and a 5% Agriculture Infrastructure and Development Cess (AIDC) on gold and silver imports, taking the effective import tax to 15% from 6%. Inflows into India's gold exchange-traded funds (ETFs) surged 186% year-on-year in the March quarter to a record 20 metric tons, the World Gold Council said last month.

China gold production slips in first quarter, consumption rises - China's gold production fell in the first quarter of 2026 versus the same period a year earlier, the China Gold Association said, as safety inspections led some smelters to suspend production for maintenance. Total gold production from domestic and imported raw materials was 136.230 metric tons in the first quarter, down 3.3% from the corresponding period a year ago. Domestic production in the quarter was 81.065 tons, down 7.1% from the previous year. Gold consumption in the quarter reached 303.292 tons, up 4.4% from a year earlier, led by a big jump in gold bars and coins, up 46.4% to 202.062 tons. Gold jewelry consumption fell 37.1% to 84.62 tons.

India gems and jewellery exports fall to five – year low on US tariffs: India's gems and jewellery exports in the 2025/26 fiscal year dipped 3.3% from a year earlier to their lowest level in five years, as shipments to top buyer the U.S. nearly halved, a leading trade body said, reflecting the impact of tariffs and duties. Gem and jewellery exports in the year to the end of March fell to \$27.72 billion, the lowest since 2020/21, when pandemic-led lockdowns disrupted trade, and down from \$28.7 billion in the previous year, the Gem and Jewellery Export Promotion Council (GJEPC) said in a statement. Shipments to the U.S. fell 45% from a year earlier to \$5.09 billion, as exports were disrupted for several months after Washington imposed reciprocal tariffs and later added a further 25% duty on Indian goods, GJEPC data showed.



27 May 2026



Weekly Economic Data

Date	Curr.	Data
May 26	USD	HPI m/m
May 26	USD	S&P/CS Composite-20 HPI y/y
May 26	USD	CB Consumer Confidence
May 27	USD	ADP Weekly Employment Change
May 27	USD	Richmond Manufacturing Index
May 28	EUR	ECB Monetary Meeting Accounts
May 28	USD	Core PCE Price Index m/m
May 28	USD	Prelim GDP q/q
May 28	USD	Prelim GDP Price Index q/q
May 28	USD	Unemployment Claims
May 28	USD	Core Durable Goods Orders m/m
May 28	USD	Durable Goods Orders m/m
May 28	USD	Personal Income m/m

Date	Curr.	Data
May 28	USD	Natural Gas Storage
May 28	USD	Crude Oil Inventories
May 29	EUR	German Prelim CPI m/m
May 29	EUR	French Consumer Spending m/m
May 29	EUR	French Final Private Payrolls q/q
May 29	EUR	French Prelim CPI m/m
May 29	EUR	French Prelim GDP q/q
May 29	EUR	Spanish Flash CPI y/y
May 29	EUR	German Unemployment Change
May 29	EUR	Italian Monthly Unemployment
May 29	EUR	Italian Prelim CPI m/m
May 29	USD	FOMC Member Schmid Speaks
May 29	USD	Goods Trade Balance

Stay Ahead in Markets with Kedia Advisory



Get Live Commodity & Equity Market Updates backed by in-depth research, data-driven insights, and expert analysis.

Why Kedia Advisory

- 👁️ Real-time market updates
- 👁️ Key levels & trend direction
- 👁️ Research-based market views
- 👁️ Trusted by active traders & investors

Visit: Kedia Advisory Website

www.kediaadvisory.com

CLICK HERE



SCAN ME



Kedia Stocks and Commodities Research Pvt Ltd

SEBI REGISTRATION NUMBER : INH000006156

Aadinath Commercial, Opp. Mumbai University, Vasant Valley Road, Khadakpada, Kalyan West

Investment in securities market are subject to market risks, read all the Related documents carefully before investing.



**Scan the QR to
connect with us**

**KEDIA ADVISORY**

KEDIA STOCKS & COMMODITIES RESEARCH PVT LTD.

Mumbai. INDIA.

For more details, please contact Mobile: +91 9619551022

Email: info@kediaadvisory.com

SEBI REGISTRATION NUMBER - INH000006156

For more information or to subscribe for monthly updates

Visit www.kediaadvisory.com

This Report is prepared and distributed by Kedia Stocks & Commodities Research Pvt Ltd. for information purposes only. The recommendations, if any, made herein are expressions of views and/or opinions and should not be deemed or construed to be neither advice for the purpose of purchase or sale through KSCRPL nor any solicitation or offering of any investment /trading opportunity. These information/opinions/ views are not meant to serve as a professional investment guide for the readers. No action is solicited based upon the information provided herein. Recipients of this Report should rely on information/data arising out of their own investigations. Readers are advised to seek independent professional advice and arrive at an informed trading/investment decision before executing any trades or making any investments. This Report has been prepared on the basis of publicly available information, internally developed data and other sources believed by KSCRPL to be reliable. KSCRPL or its directors, employees, affiliates or representatives do not assume any responsibility for or warrant the accuracy, completeness, adequacy and reliability of such information/opinions/ views. While due care has been taken to ensure that the disclosures and opinions given are fair and reasonable, none of the directors, employees, affiliates or representatives of KSCRPL shall be liable for any direct, indirect, special, incidental, consequential, punitive or exemplary damages, including lost profits arising in any way whatsoever from the information/opinions/views contained in this Report. The possession, circulation and/or distribution of this Report may be restricted or regulated in certain jurisdictions by appropriate laws. No action has been or will be taken by KSCRPL in any jurisdiction (other than India), where any action for such purpose (s) is required. Accordingly, this Report shall not be possessed, circulated and/ or distributed in any such country or jurisdiction unless such action is in compliance with all applicable laws and regulations of such country or jurisdiction. KSCRPL requires such a recipient to inform himself about and to observe any restrictions at his own expense, without any liability to KSCRPL. Any dispute arising out of this Report shall be subject to the exclusive jurisdiction of the Courts in India.